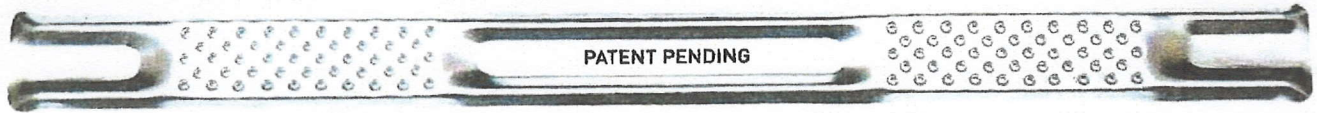
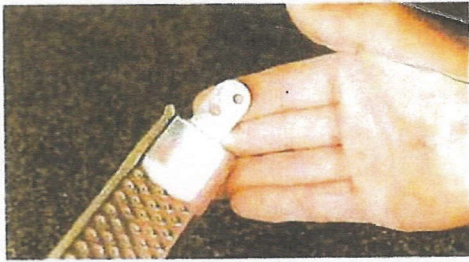


E-Z DISHWASHER BRACKET

www.ezdishwasherbracket.com

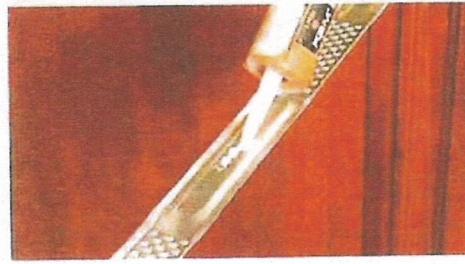


INSTALLATION AFTER PLACEMENT OF COUNTER TOP



STEP 1:

For new or remodel installations where the counter top has already been placed, bend the end tabs of the E-Z DISHWASHER BRACKET into a 90 degree angle as shown, with the raised panels facing up.



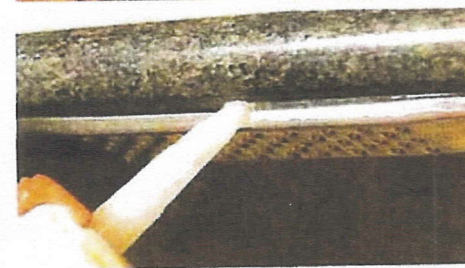
STEP 2:

Apply silicone or rubberized adhesive caulk to the three raised panels on the bracket as shown. This provides shock absorption to withstand the daily use of the dishwasher door.



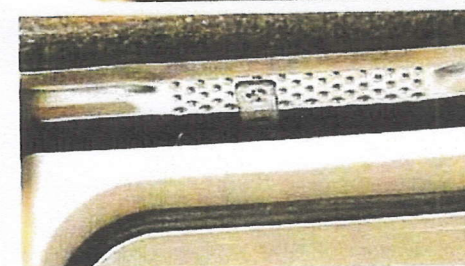
STEP 3:

Put the bracket into place under the counter top with the tabs flush to the cabinet facing. Press bracket up against the counter top – the bracket design will conceal any caulk squeeze out.



STEP 4:

Attach bracket to the cabinet sides with (4) #6X1/2" wood screws (provided). Caulk edges to provide a finished seal.



STEP 5:

Attach the dishwasher straps to the E-Z DISHWASHER BRACKET using one of the many attachment holes. This will result in a secure and professional finished installation.